

BONTEC

INSTALLATION MANUAL

STEP STOOL

Model: DJD330-TGBK



INSPECTION

1. Inspect upon receipt and before each use, never climb a damaged, bent or broken step stool. All parts must be in good working order.
2. Make sure all parts are secure; spreaders function properly.
3. Keep step stool clean, free from grease, oil, mud, snow, wet paint and other slippery material. Keep your shoes clean.
4. Never make temporary repairs of damaged or missing parts.
5. Destroy step stool if broken, worn or if exposed to fire or chemical, corrosion.
6. Suggest you refill some oil to the welding after a long time of use so that it will keep flexible for years.

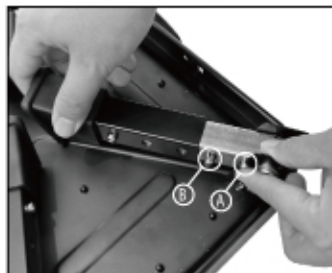
PROPER USE

1. OPEN THE STEP STOOL:

Press A or B and open the leg until the button A is locked into the place.

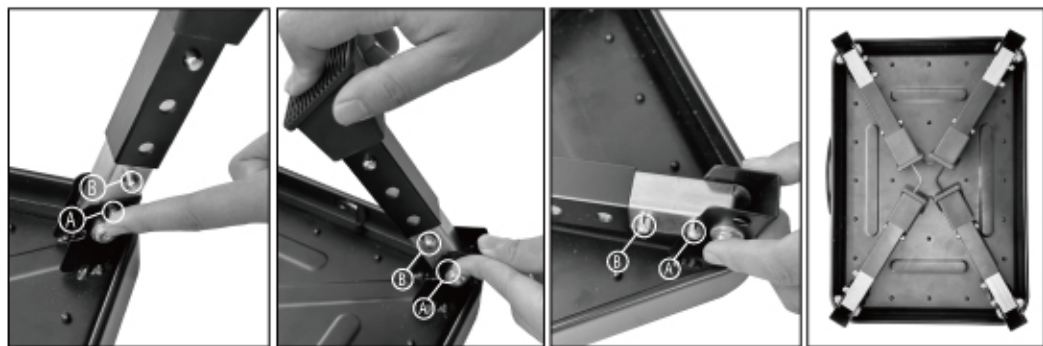


Make sure both of the little buttons are pressed down, if not, try to push the leg back and forth gently to avoid the stuck.



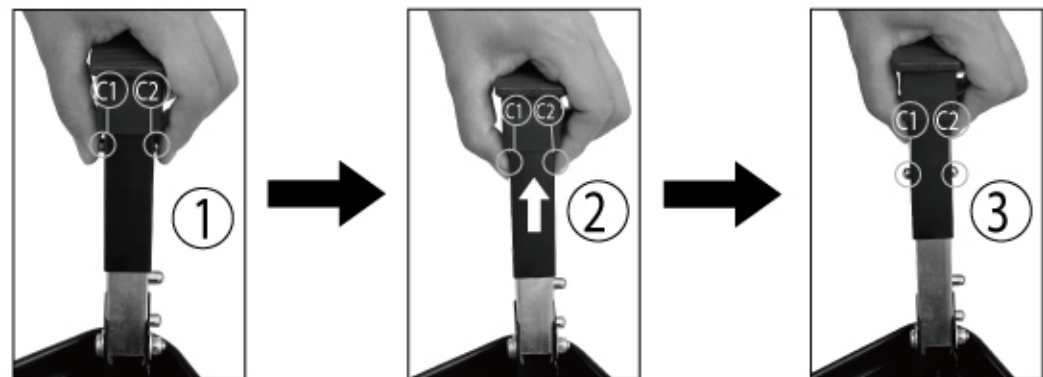
2.FOLD THE STEP STOOL:

- 1.Turn over the step stool.
- 2.Press A or B and push the leg inward until A locked into the place. (All the legs must be adjusted to the lowest height, or they won't be folded)



3.ADJUST THE HEIGHT OF THE STEP STOOL:

Press button C1 and C2 at the same time, and push/pull the leg downward/upward, until the 2 buttons C1&C2 locked into holes.



4 ADJUSTABLE HEIGHT LEG DESIGN:

